

## Reinvigorated Interiors

Denver Union Station

U.S. Embassy in Finland

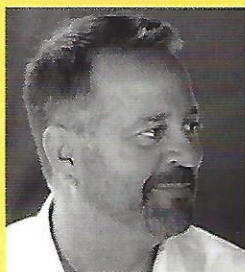
Repositioned Lobbies

#BXHPFR \*\*\*\*\*CNR-RT LOT\*\*R-030  
#100038586/1#  
M2 COHT1 M0A1S 0005 #155 #46120  
D00G HOLLAND - PRESIDENT  
HOLLAND & HOLLAND  
7112 KEY POINTE DR  
MIMMINGTON NC 28405-4752

# Tables and Casegoods

## Designers identify their favorite new tables and casegoods

**Stanley Anderson, AIA, IIDA**



Associate Principal,  
Director of Interior Design  
Moore Ruble Yudell  
Santa Monica, California

**Coalesse: fouronefive\_CO**

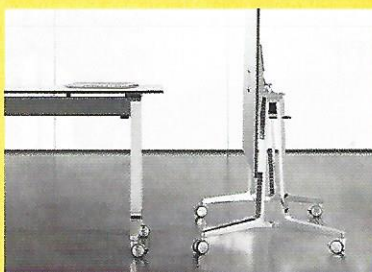
[coalesse.com](http://coalesse.com)



"Designed by the Coalesse Design Studio, the fouronefive\_CO line of tables features subtle details at the leg for wire management and options for color accents."

**Halcon: Skill**

[halconfurniture.com](http://halconfurniture.com)



"I love the thinness of this table's ½-inch top in combination with the detail of the base. It has a unique split at the base that makes it an instant classic."

**Herman Miller: Renew**

[hermanmiller.com](http://hermanmiller.com)



"All of our clients are requesting sit/stand table options now. I especially like Renew for its tabletop shape options. The soft edges of the oval top reinforce the human-centered design philosophy."

**Lisa Pinyan, IIDA, ASID**



Project Manager  
Dawson Architects  
Savannah, Georgia

**Herman Miller: Distil**

[hermanmiller.com](http://hermanmiller.com)



"It is refreshing to see a desk simply be a desk: Distil's midcentury-modern molded-plywood frame is timeless and functional. It would suit an office environment for telecommuters who need a place to work for only a few hours per week."

**Darran: Grove**

[darran.com](http://darran.com)



"The imperfections and natural beauty of wood are showcased in the Grove live-edge table collection by Darran. Simple legs round out the table's design. It is a true statement piece, as well as a work of art."

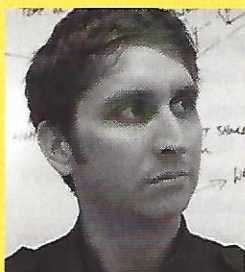
**Janus et Cie: Gargantua**

[janusetcie.com](http://janusetcie.com)



"We practice in a beautiful Southern city, and many of our clients want to capture outdoor space for break or meeting areas. The industrial feel of the galvanized steel and wood slats of the Gargantua table provide a perfect juxtaposition to Savannah's historic brick architecture."

**Chris Baribeau, AIA**



Principal  
Modus Studio  
Fayetteville, Arkansas

**James DeWulf: Ping Pong Table**

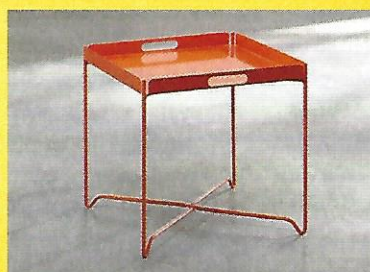
[jamesdewulf.com](http://jamesdewulf.com)



"Play is important. A well-designed, durable, and modern concrete piece like this balances outdoor meetings, lunches, or the occasional backhand chop to finish your opponent."

**Sauder: Tray Table**

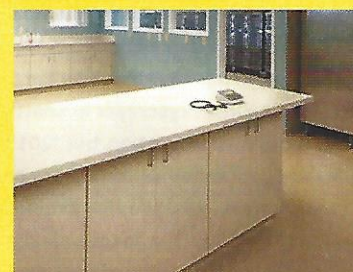
[sauder.com](http://sauder.com)



"This practical, small, clever, and affordable orange side table is well detailed with thin lines and is made of powder-coated steel. The flat-pack design includes a dynamic X stand."

**Shield Casework: Curve**

[shieldcasework.com](http://shieldcasework.com)



"Shield Casework's manifesto is that given modern capabilities of fabrication, minor adjustments to meet design needs should not cost more. The Curve modular casework collection is clean, has thoughtful details, and an overall modern aesthetic that make it ideal for many applications."